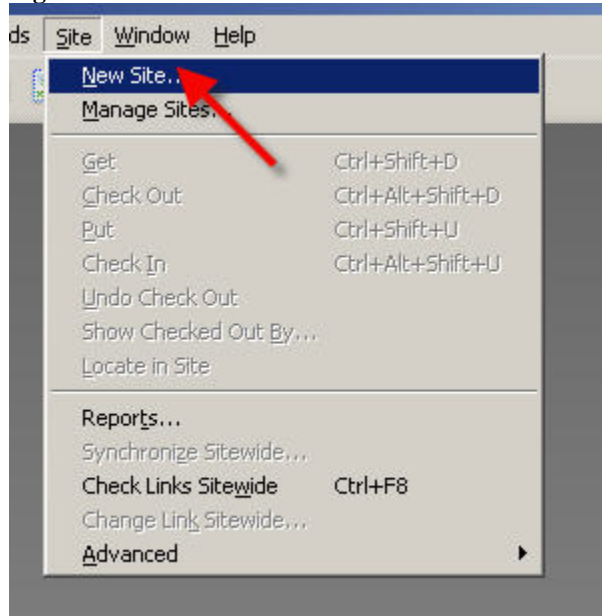


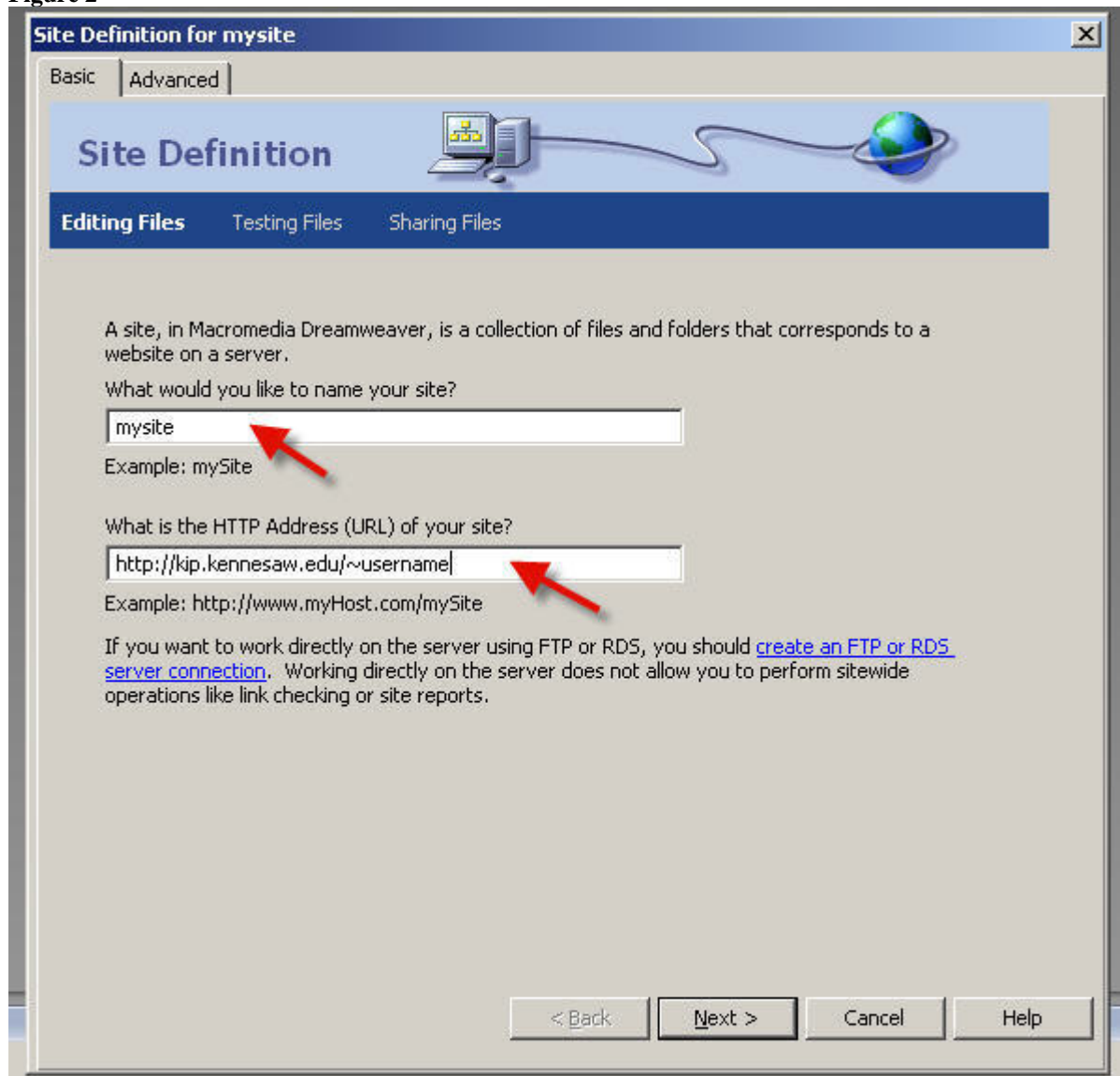
Configuring Dreamweaver for KIP Remote Access

Figure 1



Open Dreamweaver on your machine and select Site => New Site from the Menu bar at the top of the page.

Figure 2



Name your site. You can name this anything. It serves only as a naming convention for you.

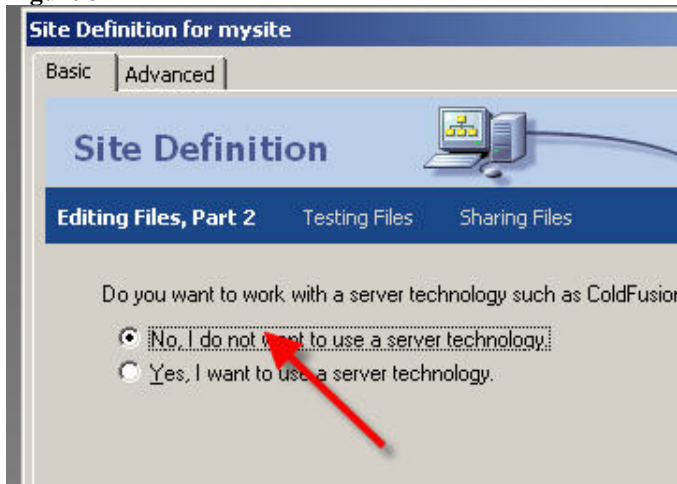
For the URL of site, use the username you were given in class. Be sure to use the “~” with your logon username.

NOTE: the “~” (tilde) is located on the key to the left of the “1” key.

DO NOT use word “username” as seen in the example.

Select “NEXT.”

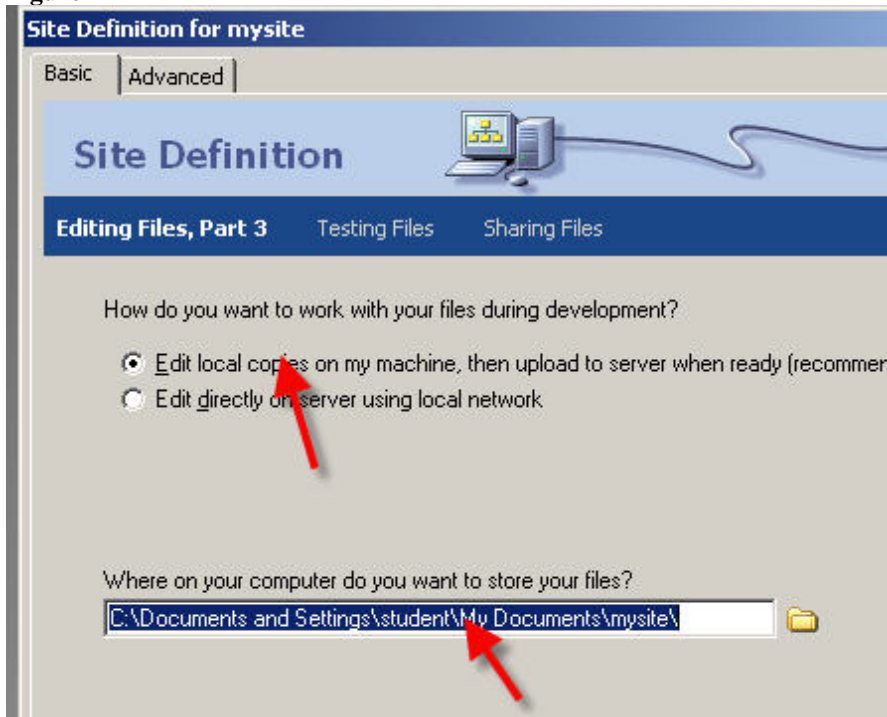
Figure 3



Use the default selection.

Select "NEXT."

Figure 4



Use the default selection for the first option.

For the second option, use the default unless you need your files in a different location on the local computer.

Select "NEXT."

Figure 5

Site Definition for mysite

Basic | Advanced

Site Definition

Editing Files | Testing Files | **Sharing Files**

How do you connect to your remote server?
FTP

What is the hostname or FTP address of your Web server?
kip.kennesaw.edu

What folder on the server do you want to store your files in?
public_html

What is your FTP login?
username

What is your FTP password?
..... Save

Use Secure FTP (SFTP)

Test Connection

1. Select FTP
2. The hostname of KIP (**do NOT use http in the hostname**)
3. Your working directory on the **server**. Note the **underscore** between public and html.
4. Your logon id - **DO NOT INCLUDE the “~” (tilde)**.
5. Password
6. This must be checked

Once you have configured your settings, test by using the **Test Connection** button.

Select “NEXT.”

Site Definition for mysite

Basic | **Advanced**

Site Definition

Editing Files | Testing Files | **Sharing Files, Part 2**

Do you want to enable checking in and checking out files cannot edit the same file at the same time?

Yes, enable check in and check out.

No, do not enable check in and check out.

Figure 6

Use the default selection.

Figure 7



Unblock or allow Dreamweaver to bypass any firewalls you may have running.